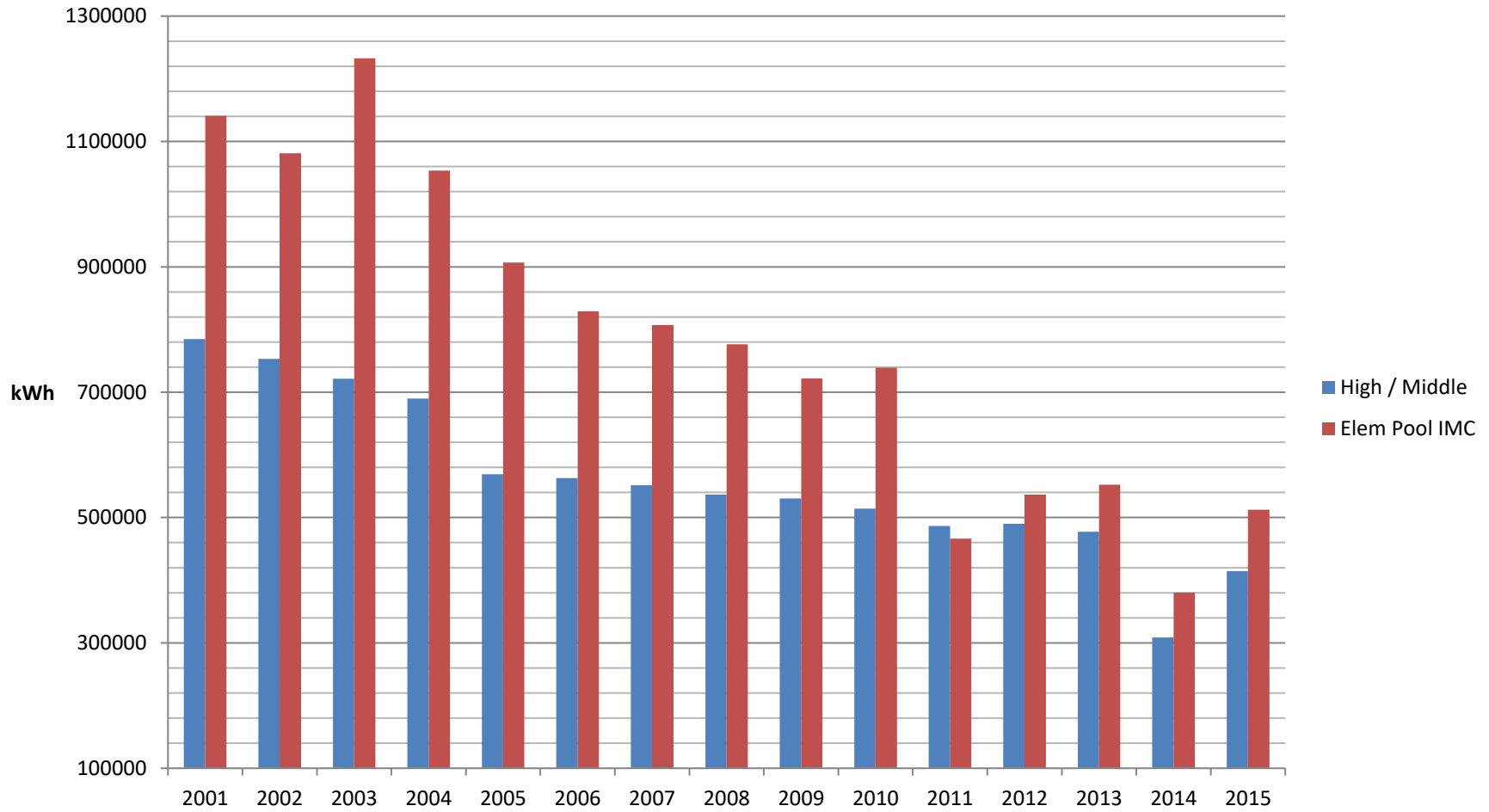


Electricity Usage



<u>Year</u>	<u>Elementary kwh</u>	<u>High School kwh</u>	<u>Combined kwh</u>	<u>Reduced From Start</u>	<u>% From Start</u>
2003	1,232,480	721,600	1,954,080		
2004	1,053,600	689,800	1,743,400	210,680	10.8%
2005	906,880	569,000	1,475,880	478,200	24.5%
2006	829,040	562,800	1,391,840	562,240	28.8%
2007	807,280	551,400	1,358,680	595,400	30.5%
2008	776,320	536,440	1,312,760	641,320	32.8%
2009	722,016	530,600	1,252,616	701,464	35.9%
2010	739,120	514,000	1,253,120	700,960	35.9%
2011	466,459	486,538	952,997	1,001,083	51.2%
2012	536,590	489,979	1,026,569	927,511	47.5%
2013	552,485	477,110	1,029,595	924,485	47.3%
2014	380,455	308,511	688,966	1,265,114	64.7%
2015	512,430	414,491	926,921	1,027,159	52.6%

Lighting Project:

Estimated kwh due to lighting - 25%

Estimated current kwh due to lighting - 231,730.25

Estimated reduction due to LED Lighting Project - 50%

Estimated Kwh reduction due to lighting project - 115,865

Estimated savings due to lighting project @ .11/kwh - \$12,745

Energy Conservation Agreement with Excel Energy:

Reduces our monthly electric bill by 10%.

District agrees to reduce electric use during curtailment periods.

Solar Connect Project:

District owns 10 KW of space on the Excel Solar Connect Array

Estimated production of 12,800 kwh per year. (1.38% of 2015 usage)

The Next Steps:

Energy Watchdog Committee

Energy Conservation as Individuals (turn off lights, computers, etc)

Increase reduction threshold for Energy Curtailment Program

District Alternative Energy Goal: 5% of total electrical use by 2020?