

Proposal

Partner with Excel Energy in ownership of a new "Solar Garden"

Excel Energy is building a "Solar Garden" in Skyway Park in Eau Claire. Building will begin soon with completion targeted for August of 2016. Upon completion, Excel Energy will have seven acres under solar panels generating 1,000 KW. Excel Energy also plans to build two similar structures in other counties. This is a small entry into solar for Excel as the sites entire output at maximum capacity would be expected to be similar to our annual District usage. Please find attached several pages of material produced by Excel Energy explaining their program as well as District energy usage provided by Excel Energy.

Excel Energy asked to meet with us to propose our involvement in their Solar Garden based on our working relationship with them. We have met with Excel rep Oscar Brandser at least once per year (generally more often) as we have instituted energy reduction programs and projects. They recognize our District as one of their most aggressive customers in implementing energy conservation programs.

Excel has set a minimum buy in at .2 KW of power and a maximum buy in of 400 KW. They expect the Solar Garden space to be sold out very shortly. They could have chosen to sell the space out immediately to a few large customers but would prefer to have more customers actively involved.

Each customer will purchase units of power for a period of 25 years. Excel will maintain the Solar Garden for that 25 year period at no cost to the energy owner. At the end of the 25 year period, ownership reverts back to Excel.

The cost of the power will be \$1,780.00 per KW. A \$200.00 down payment per KW is due immediately to save energy space. Excel will pay .069 cents per KWH of power generated on behalf of that customer.

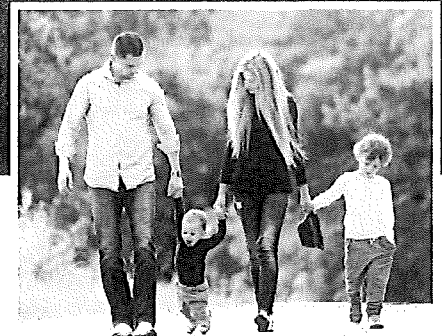
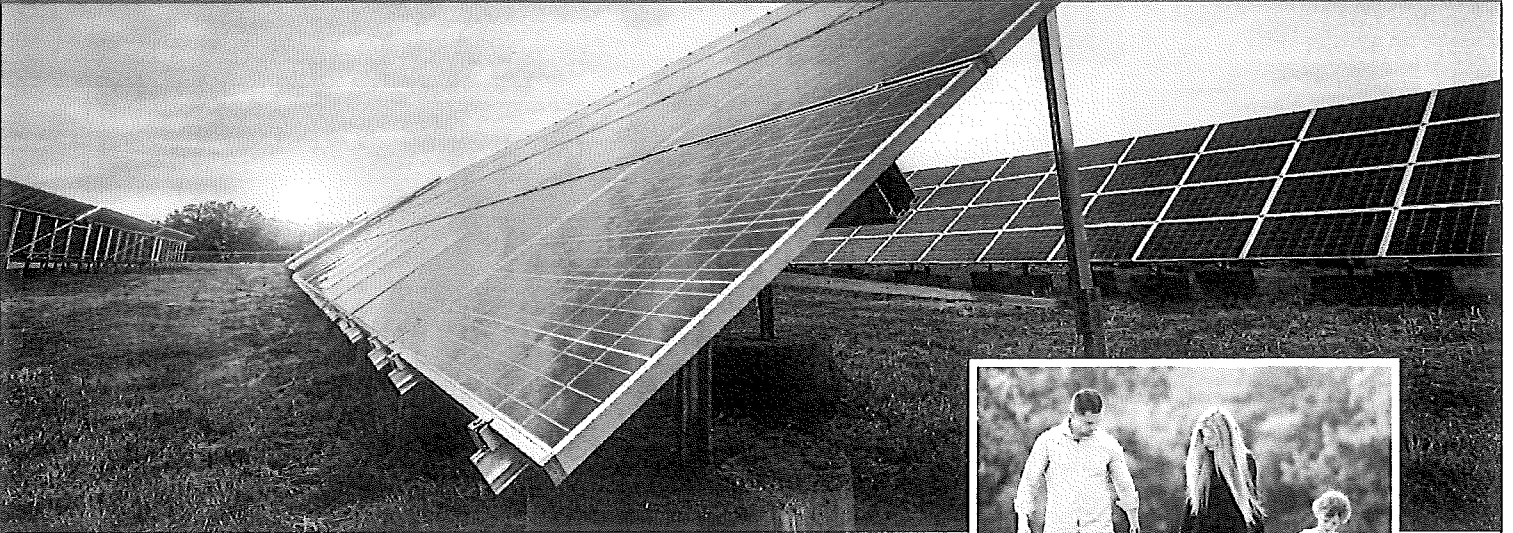
Each KW of solar panel is conservatively estimated to produce 1,280 KWH annually. At .069 cents per KWH, that generates \$88.32 per year of energy. Excel will provide a credit in that amount on our electric bill.

As a learning tool, we expect to tour the Solar Garden facility with our students at some point, likely in upper elementary or middle school. We will make statistics available to our student body as to how much energy we have produced as often as possible.

Our recommendation is for the District to purchase 10 KW of space in Excel Energy's Solar Garden at a price of \$17,800.00. The \$2,000 down payment would come from the 2015-16 budget. The \$15,800 payment would come from the 2016-17 budget.



Join Solar*Connect CommunitySM



Introducing Wisconsin's largest community solar garden program

It's easy

- Simple enrollment
- Earn a credit on your Xcel Energy bills

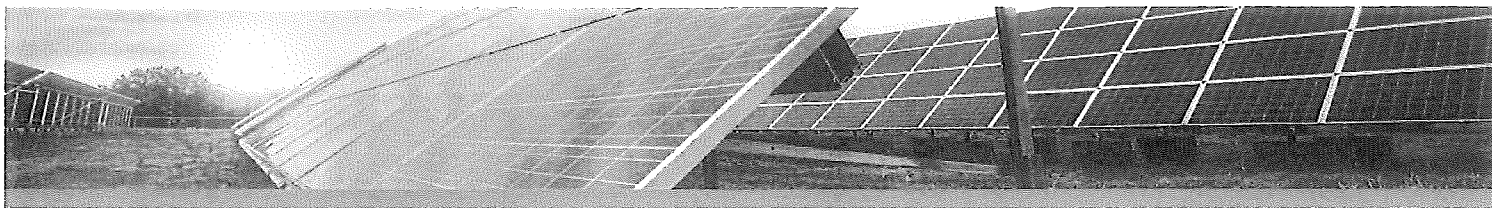
It's flexible

- Power some, or all, of your electric energy needs with solar energy
- Secure your solar costs when you sign up

It's local

- Purchase energy from locally sourced community solar arrays in Wisconsin
- Be a part of Wisconsin's largest community solar program





Solar*Connect Community FAQs

It's efficient, roofless and maintenance free—find out how you can participate below.

	Xcel Energy Solar*Connect Community Garden I	Xcel Energy Solar*Connect Community Garden II
Location	Eau Claire County	La Crosse County
System Size	1 MW	1 MW
Number of Panels	3,225	3,225
Capacity per Panel	310 Watts	310 Watts
Solar Bill Credit*	Residential, Farm and Small Business: \$0.074/kWh Large Business: \$0.069/kWh	
Maximum Subscription	100% of annual energy use (up to 400 kW)	
Subscription Term	25 years	
Participation	All Xcel Energy electricity customers in Wisconsin	

*Credit based on rates in effect in 2016

What is community solar?

Community solar—often referred to as a community solar garden—is an array of solar panels that generates clean and renewable electricity. Solar*Connect Community, a new locally sourced solar program in Wisconsin, will be built, managed and maintained by a developer partner and connected to the local power grid operated by Xcel Energy. Subscribers—or program participants—pay a one-time fee to subscribe to the program and in turn receive a credit on their monthly electric bill based on the solar energy production of the project.

What are the benefits of community solar?

- Provides local, clean and affordable energy
- Allows residents and businesses to participate in solar without the hassle and expense of installing and maintaining rooftop solar arrays
- Especially desirable for renters or customers whose roofs are old, face the wrong direction, have limited space or excessive shade
- Flexible participation levels to fit different budgets and energy needs

How do I sign up?

There are two ways to sign up:

1. Complete the subscription agreement form and mail to Xcel Energy (form available on Xcel Energy's website).
2. Complete the subscription agreement form at a Solar Power HourSM event hosted by Midwest Renewable Energy Association, a partner of Xcel Energy. Solar Power Hours are designed to provide all the information you need to make an educated decision and help you sign up for the subscription best suited for your needs. Please visit Xcel Energy's website to find a Solar Power Hour near you.

How do I calculate my subscription size to match my energy needs and budget?

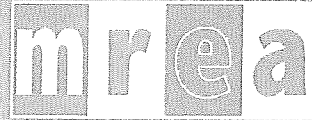
You can start small or go big—the minimum subscription size is 200 watts and the maximum is 400 kilowatts. Subscriptions can be sized up to 100 percent of your average annual electricity usage. Xcel Energy has residential and business subscription calculators on our website, so you can check various subscription sizes to match your energy and budget needs.

For more frequently asked questions, visit our website at www.xcelenergy.com/SolarConnectCommunity or call our Energy Expert Team at 1-800-824-1688.



SOLAR POWER HOURS

Solar*Connect CommunitySM for
Xcel Energy Customers!



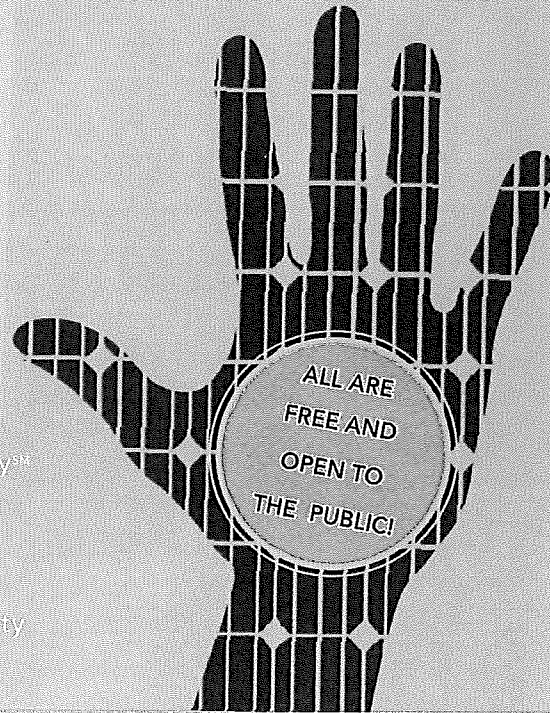
midwest renewable energy association
www.midwestrenew.org

SOLAR POWER HOURSM

Are you interested in going solar but live in an apartment, have a shaded home or roof, or just don't have the space at your business or organization? Then a community solar garden is the perfect option for you! MREA is excited to partner with Xcel Energy to launch Solar*Connect Community in Wisconsin.

HERE'S WHAT WE'LL COVER:

- Break down of Xcel Solar*Connect Community*
- Basics of community solar
- Benefits of community solar
- Sizing your solar subscription
- Economic benefits and affordability
- How to subscribe to Solar*Connect Community



EDUCATIONAL SESSIONS at 7:00 p.m.

MARCH

3/2 Wednesday
Lazy Monk Brewing
97 W Madison St, Eau
Claire, WI 54702

3/3 Thursday
Menomonie Food
Co-op, 814 Main St E,
Menomonie, WI 54751

3/14 Monday
Western Technical
College, Lunda Center
Conference Hall West,
319 7th St N, La Crosse,
WI 54601

3/16 Wednesday
Phipps Center for the
Arts, River Room, 109
Locust St, Hudson, WI
54016

3/23 Wednesday
Northland College,
Alvord Theatre, 1411
Ellis Ave, Ashland, WI
54806

3/30 Wednesday
Avalon Hotel, 1009 W
Park Ave, Chippewa
Falls, WI 54729

3/31 Thursday
Chippewa Valley Technical
College, 4000 Campus
Rd, Eau Claire, WI 54703

APRIL

4/5 Tuesday
Sparta Barney
Community Center,
1000 E. Montgomery St,
Sparta, WI 54656

4/13 Wednesday
Abbotsford Public
Library, 203 N 1st St,
Abbotsford, WI 54405

4/21 Thursday
People's Food
Co-op, 315 5th Ave S,
La Crosse, WI 54601

Questions? Contact Doug Stingle: dougs@midwestrenew.org, or call 715-592-6595 ext. 104

Solar*Connect Community is an Xcel Energy solar garden program in Wisconsin. Xcel Energy has partnered with MREA to help promote the Solar*Connect Community program in Wisconsin communities and provide information about the benefits of solar energy.

Solar*Connect Community™

It's efficient, roofless and maintenance-free.

*Here's more of what you need to know about clean, renewable carbon-free solar.
Answers to some frequently asked questions:*

What is community solar?

Community solar – often referred to as a community solar garden – is an array of solar panels that generates clean and renewable electricity. Solar*Connect Community, a new locally sourced solar program in Wisconsin, will be built, managed and maintained by a developer partner and connected to the local power grid operated by Xcel Energy. Subscribers – or program participants – pay a one-time fee to subscribe to the program and in turn receive a credit on their monthly electric bill based on the solar energy production of the garden.

What are the benefits of community solar?

Community solar programs like Solar*Connect Community benefit communities by providing local, clean and affordable energy. Residents and businesses alike can participate in solar without installation or maintenance of their own system. This program is especially desirable for renters or customers whose roofs are old, face the wrong direction, have limited space or excessive shade. Community solar also offers flexible participation levels to fit different budgets and energy needs.

Where will the solar gardens be located?

The plan is to build two solar gardens in Wisconsin in 2016: one in Eau Claire County and the other in La Crosse County.

How big will the solar gardens be?

Each panel is approximately three feet wide by six feet long and can produce 310 watts. 3,225 panels in total combine to produce 1 megawatt at each garden and will cover approximately seven acres (an acre is roughly the size of a football field).

Who can participate?

Any Xcel Energy electricity customer in Wisconsin can participate in Solar*Connect Community – even current Windsorce® subscribers,

How do I get started?

To begin you can simply complete the subscription agreement form online at xcelenergy.com/SolarConnectCommunity or call 1-800-824-1688. Another option is to attend a *Solar Power Hour* event hosted by Xcel Energy, in partnership with Midwest Renewable Energy Association. You'll get all the information you need to make an educated decision and assistance with your subscription. Check out our website for a listing of locations and scheduled events.

How much does a subscription cost?

Xcel Energy plans to offer subscriptions at a cost of \$1,780 per kilowatt. The minimum subscription size of 200 watts will cost \$356, which would produce enough energy to offset about 3 percent of an average residential customer's usage.

How do I calculate a subscription level that matches my energy needs and budget?

You can start small or go big – the minimum subscription amount is 200 watts and the maximum is 400 kilowatts. Your subscriptions can be sized up to 100 percent of your average annual electricity usage (up to 400 kW). Xcel Energy has online residential and business subscription calculators at xcelenergy.com/SolarConnectCommunity so that you can check out various subscription sizes to match your energy and budget needs. The typical home in our Wisconsin area uses 750 kWh a month (9,000 kWh per year). The example below provides an approximate subscription size necessary to cover a percentage of a home's monthly energy use.

Goal Usage Match (%)	Monthly usage Match (kWh)	Approximate Subscription (kW)	Approximate Cost
25%	187	1.8	\$3,204
50%	375	3.6	\$6,408
100%	750	7	\$12,460

How do I pay my initial deposit, and how will the remaining balance be invoiced?

Residential subscribers can pay the \$200 per kilowatt deposit with a check. Business subscribers can pay the deposit by check or wire transfer. All subscribers can pay by check or credit card at a *Solar Power Hour* event. We will send an invoice for the remaining balance after the in-service date for the solar garden is determined. This balance must be paid prior the solar garden being in-service.

Are there financing or loan options for Solar*Connect Community?

Yes. You can reach out to one of the financial institutions listed below to discuss loan options to help finance your Solar*Connect Community subscription. You can also discuss financing with any financial institution of your choice.

- BMO Harris Bank 763-691-4991
- Royal Credit Union 1-800-341-9911 ext. 8830 (Financing available only in service area)

What is the bill credit rate and how is it determined?

In 2016, the bill credit for residential, farm and small business is \$0.074/kWh. For large business, the bill credit is \$0.069/kWh. The bill credits are based on fixed and variable production costs embedded in Xcel Energy's current rates. This is not based on the full retail rate, but rather components that go into the retail rate for generation (i.e. average costs of all generation in entire fleet). If the generation fleet becomes more expensive over time, the bill credit will increase accordingly. The bill credit established in 2016 is considered the "floor" for the bill credit. This means that the bill credit will never be lower than what it is in 2016. It is possible that over a standard 25-year contract, there will be no increase.

Will the amount of my bill credit change over time?

Yes. Due to the daily and seasonal variations in sunlight and solar production, your monthly bill credit will change throughout the year.

As a subscriber, will I receive Renewable Energy Credits?

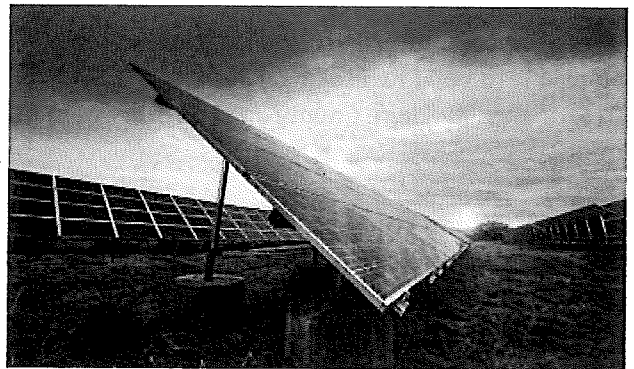
Xcel Energy will track the Renewable Energy Credits associated with the solar garden program and retire those RECs on behalf of the subscribers. Because Xcel Energy will retire the RECs, subscribers are able to represent that they have offset their energy use with solar energy.

Can I sell my garden subscription to another subscriber or get a refund?

No. A subscriber can choose to gift their subscription to a not-for-profit organization that is an electric customer of Xcel Energy in Wisconsin. Subscribers can choose to terminate their contract early, but they will not receive a refund.

What if I move before the end of the 25-year term of the program?

If you move within the Xcel Energy Wisconsin service area you can transfer your subscription to your new address. If you sell your home and move out of our service area, you can choose to return your subscription back to Xcel Energy and receive a prorated refund. You also can choose to gift your subscription to a not-for-profit organization that is an electric customer of Xcel Energy in Wisconsin. Donation of your subscription to an eligible organization/charity may be tax deductible. Consult with your tax adviser to discuss all available options.





Solar*Connect Community

Solar Power Hours

Xcel Energy has partnered with the Midwest Renewable Energy Association to host “Solar Power Hours” at several locations in the Chippewa Valley. Solar Power Hours are designed to provide all the information you need to make an educated decision regarding solar power for your organization.

All Solar Power Hours start at 7 pm.

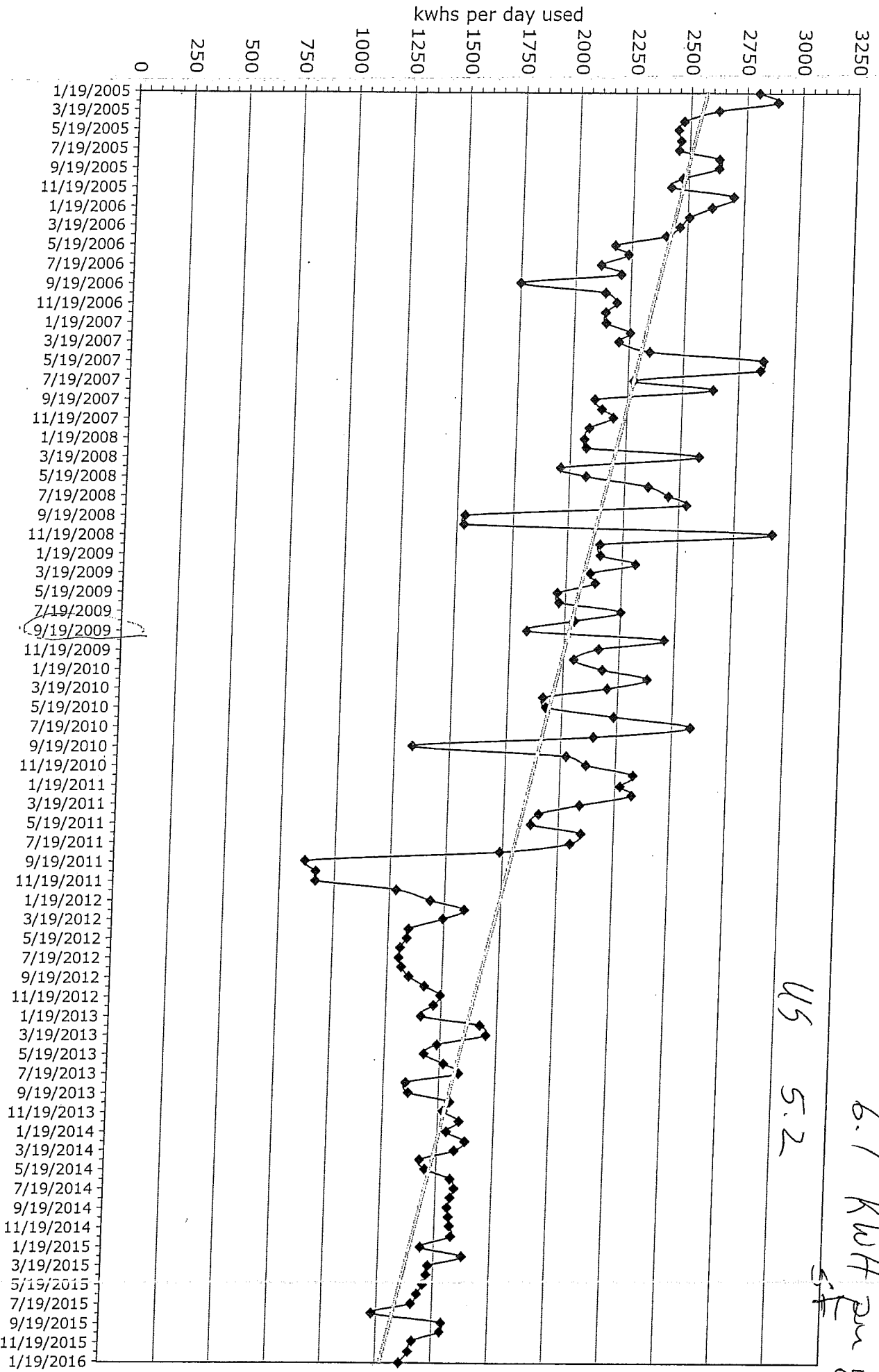
- Wed 3/2/16 Eau Claire - Lazy Monk Brewing, 97 W. Madison St.
- Thurs 3/3/16 Menomonie - Menomonie Food Co-op, 814 Main St. E.
- Wed 3/30/16 Chippewa Falls - Avalon Hotel and Conference Center
- Thurs 3/31/16 Eau Claire - Chippewa Valley Technical College

Xcel Energy has officially launched the Solar*Connect Community program for customers. The Solar*Connect Community program is easy, flexible and provides organizations an opportunity to participate in solar generation without the installation or maintenance of their own system. Community solar offers an easy way to complement any organization’s sustainability program and renewable energy goals. Solar*Connect Community program participants receive monthly bill credits based on the energy produced by their subscription size.

Please contact me and attend one of the Solar Power Hours to learn more about Solar*Connect.

Oscar Brandser
Xcel Energy Account Manager
715-737-4621
oscar.c.brandser@xcelenergy.com

Stanley Elementary School, Including Pool
 Ave kWhs per day energy use 2005 thru 2015

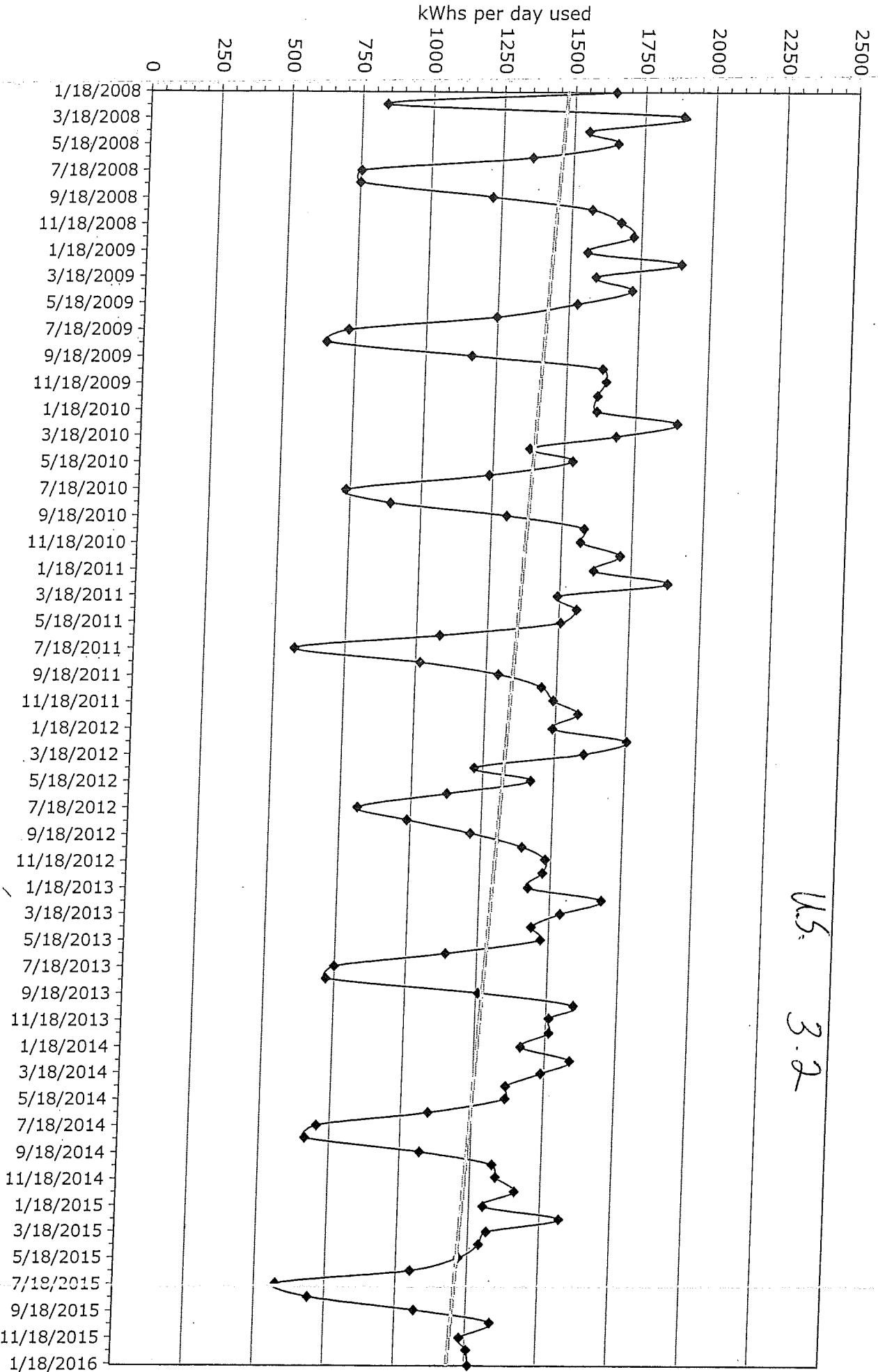


45 5.2
 6.1 kWh per yr

Stanley High School
 Ave kWhs per day energy use 2008 thru 2015

H.S.

8.1 kWh per yr
 per SF



U.S. 3.2

STANLEY BOYD SCHOOLS

electric

507 E 1ST AVE

ES

5.2

kwh/SF/yr

52-6431835-8

STANLEY 54768-1279

MS

8.1

kwh/SF/yr

Meter 013065635

HS

8.1

kwh/SF/yr

Premise Number: 302875024

Elementary School

87000 SF incl pool

Pk Cntl TOD Service PDL = 50 kW

est PCR

read date	days	on-kwh	off-kwh	tot-kwh	kwh/day	act kw	PF	elect\$	savings	kwh/yr	kwh/SF/yr
02/18/16	29	21225	21926	43151	1488	121	94%	\$4,160	\$192		
01/20/16	35	21632	25852	47484	1357	125	95%	\$4,371	\$203	529057	6.1
12/16/15	34	21632	25846	47478	1396	118	95%	\$4,261	\$184		
11/12/15	29	20064	20905	40969	1413	108	95%	\$3,851	\$157		
10/14/15	29	22165	22421	44586	1537	150	94%	\$4,498	\$271		
09/15/15	30	21989	24303	46292	1543	173	92%	\$4,872	\$579		
08/16/15	31	18250	19789	38039	1227	116	93%	\$3,938	\$311		
07/16/15	30	19037	23046	42083	1403	122	95%	\$4,209	\$339		
06/16/15	30	20416	22441	42857	1429	154	95%	\$4,399	\$490		
05/17/15	31	20785	24308	45093	1455	144	96%	\$4,306	\$255		
04/16/15	29	19613	22993	42606	1469	118	97%	\$3,972	\$184		
03/18/15	29	19833	22958	42790	1476	135	97%	\$4,104	\$230		
02/17/15	30	23585	25195	48780	1626	133	97%	\$4,490	\$225		
01/18/15	34	20039	28872	48911	1439	135	96%	\$4,371	\$230	565381	6.5
12/15/14	33	23310	28652	51962	1575	129	97%	\$4,518	\$214		
11/12/14	29	21800	23663	45463	1568	121	97%	\$4,105	\$192		
10/14/14	29	21319	23993	45312	1563	128	97%	\$4,274	\$367		
09/15/14	32	22489	27274	49763	1555	172	95%	\$4,953	\$575		
08/14/14	29	20044	25416	45460	1568	135	94%	\$5,031	\$400		
07/16/14	30	20714	26760	47474	1583	153	94%	\$4,660	\$485		
06/16/14	32	22334	27729	50063	1565	179	95%	\$4,867	\$350		
05/15/14	29	19156	22810	41966	1447	118	96%	\$3,847	\$184		
04/16/14	29	18876	22391	41267	1423	120	96%	\$3,818	\$190		
03/18/14	29	20820	24938	45759	1578	117	96%	\$4,067	\$182		
02/17/14	32	22517	29464	51981	1624	128	96%	\$4,496	\$211		
01/16/14	32	20835	28460	49295	1541	125	96%	\$4,220	\$203	557294	6.4
12/15/13	33	23153	29514	52666	1596	131	96%	\$4,399	\$220	1527	
11/12/13	29	21178	22993	44171	1523	120	96%	\$3,872	\$190		
10/14/13	29	21617	23375	44992	1551	171	96%	\$4,358	\$570		
09/15/13	32	21924	21656	43580	1362	182	94%	\$4,497	\$622		
08/14/13	29	17396	21734	39129	1349	136	94%	\$3,867	\$405		
07/16/13	30	19894	27722	47616	1587	165	94%	\$4,530	\$542		
06/16/13	32	21151	27416	48567	1518	153	95%	\$4,414	\$279		
05/15/13	29	20136	21256	41393	1427	125	96%	\$3,741	\$203		
04/16/13	30	19631	24925	44556	1485	119	96%	\$3,848	\$187		
03/17/13	31	21715	31071	52786	1703	119	96%	\$4,269	\$187		
02/14/13	29	22402	26141	48543	1674	126	97%	\$4,153	\$206		
01/16/13	34	20295	27603	47898	1409	125	96%	\$3,951	\$203	510844	5.9
12/13/12	31	21695	23697	45392	1464	129	97%	\$3,792	\$214	1400	
11/12/12	29	21071	22235	43306	1493	116	97%	\$3,611	\$179		
10/14/12	31	20819	23198	44017	1420	159	96%	\$4,007	\$513		
09/13/12	30	20797	19646	40444	1348	184	93%	\$4,088	\$631		
08/14/12	29	18722	19363	38085	1313	171	93%	\$3,826	\$570		
07/16/12	32	18813	22789	41603	1300	141	93%	\$3,822	\$429		
06/14/12	30	18758	20407	39165	1306	129	96%	\$3,615	\$214		
05/15/12	29	18985	19674	38659	1333	142	96%	\$3,548	\$249		
04/16/12	32	19219	23681	42900	1341	160	96%	\$3,846	\$298		
03/15/12	29	21079	22259	43338	1494	126	96%	\$3,733	\$206		
02/15/12	29	21663	24374	46037	1588	127	97%	\$3,879	\$209		
01/17/12	34	20335	28451	48787	1435	123	96%	\$3,899	\$198	589315	6.8
12/14/11	28	17094	18709	35803	1279	124	97%	\$3,178	\$201	1615	
11/16/11	30	15748	11663	27411	914	91	98%	\$2,600	\$111		
10/17/11	33	17323	12829	30152	914	91	98%	\$2,877	\$193		
09/14/11	30	16108	9798	25907	864	157	95%	\$3,091	\$504		
08/15/11	27	19991	26911	46902	1737	148	93%	\$4,128	\$462		
07/19/11	32	24348	41398	65746	2055	156	90%	\$5,155	\$499		

06/17/11	29	23785	37202	60987	2103	156	90%	\$4,808	\$287		
05/19/11	33			61860	1875	158		\$4,698	\$293	start PCR	
04/16/11	28			53440	1909	154		\$4,709			
03/19/11	31			64880	2093	174		\$5,099			
02/16/11	29			67440	2326	181		\$5,691			
01/18/11	34			77280	2273	190		\$6,000		780960	9.0
12/15/10	32	33600	40960	74560	2330	194	93%	\$5,882		2140	
11/13/10	28	27360	31920	59280	2117	174	94%	\$4,959			
10/16/10	31	29120	33680	62800	2026	186	93%	\$5,512			
09/15/10	30	19920	20000	39920	1331	170	93%	\$4,423			
08/16/10	30	26800	37600	64400	2147	212	89%	\$6,066			
07/17/10	33	34320	50960	85280	2584	205	89%	\$7,011			
06/14/10	30	28080	38960	67040	2235	263	92%	\$6,213			
05/15/10	31	26800	32880	59680	1925	167	94%	\$4,853			
04/14/10	29	23840	31600	55440	1912	148	94%	\$4,462			
03/16/10	29	28960	34880	63840	2201	187	94%	\$3,660			
02/15/10	30	31120	40320	71440	2381	187	94%	\$5,586			
01/16/10	33	30000	41840	71840	2177	188	93%	\$5,595		765640	8.8
12/14/09	33			67520	2046	188		\$5,404		2098	
11/11/09	29			62560	2157	186		\$5,204			
10/13/09	28			68680	2453	213		\$5,906			
09/15/09	32			58480	1828	194		\$5,450			
08/14/09	28			57200	2043	148		\$5,036			
07/17/09	30			67520	2251	154					
06/17/09	30			59120	1971	194					
05/18/09	31			60800	1961	162					
04/17/09	31			66080	2132	194					
03/17/09	29			61120	2108	195					
02/16/09	28			64720	2311	174					
01/19/09	35			75280	2151	178				798320	9.2
12/15/08	33			70880	2148	182				2187	
11/12/08	29			84800	2924	222					
10/14/08	29			44400	1531	190					
09/15/08	33			50640	1535	203					
08/13/08	28			70960	2534	162					
07/16/08	30			73520	2451	195					
06/16/08	32			75440	2358	195					
05/15/08	28			58080	2074	163					
04/17/08	34			66560	1958	165					
03/14/08	27			69760	2584	177					
02/15/08	28			58000	2071	178					
01/18/08	35			72160	2062	178				853120	9.8
12/14/07	32			66640	2083	173				2337	
11/12/07	28			61280	2189	231					
10/15/07	31			66240	2137	190					
09/14/07	30			63120	2104	224					
08/15/07	29			76480	2637	238					
07/17/07	33			75120	2276	238					
06/14/07	30			85440	2848	238					
05/15/07	28			80080	2860	211					
04/17/07	32			75040	2345	205					
03/16/07	28			61680	2203	175					
02/16/07	31			69840	2253	179					
01/16/07	33			70720	2143	188				800480	9.2
12/14/06	31			66320	2139	188				2193	
11/13/06	31			67840	2188	188					
10/13/06	30			64080	2136	190					
09/13/06	28			48960	1749	175					
08/16/06	29			63920	2204	174					
07/18/06	33			69760	2114	147					
06/15/06	29			64800	2234	228					
05/17/06	30			65200	2173	199					
04/17/06	28			67280	2403	217					
03/20/06	31			76400	2465	202					

02/17/06	30		75200	2507	202				
01/18/06	34		88640	2607	202				
12/15/05	31		83760	2702	207			933840	10.7
11/14/05	28		67760	2420	231			2558	
10/17/05	31		76640	2472	229				
09/16/05	29		76320	2632	227				
08/18/05	29		76320	2632	216				
07/20/05	30		73520	2451	235				
06/20/05	34		83600	2459	224				
05/17/05	28		68480	2446	230				
04/19/05	33		81520	2470	218				
03/17/05	28		73520	2626	182				
02/17/05	29		83760	2888	195				
01/19/05	36		100960	2804	192			1153680	13.3
12/14/04	34		84480	2485	170			3161	
11/10/04	29		88080	3037	222				
10/12/04	29		94960	3274	258				
09/13/04	32		97200	3038	269				
08/12/04	28		92080	3289	243				
07/15/04	31		112400	3626	243				
06/14/04	31		110400	3561	268				
05/14/04	28		94160	3363	262				
04/16/04	30		96480	3216	255				
03/17/04	33		98720	2992	234				
02/13/04	25		83760	3350	240				
01/19/04	35		113440	3241	242			1214968	14.0
12/15/03	34		107920	3174	234			3329	
11/11/03	28		96080	3431	258				
10/14/03	32		112160	3505	274				
09/12/03	30		108960	3632	294				
08/13/03	28		98000	3500	235				
07/16/03	33		113920	3452	264				
06/13/03	30		98480	3283	270				
05/14/03	30		93280	3109	275				
04/14/03	32		100080	3128	246				
03/13/03	28		88728	3169	225				
02/12/03	28		83920	2997	230				
01/16/03	37		100480	2716	207			1029120	11.8
12/10/02	29		83680	2886	223			2820	
11/11/02	31		86880	2803	223				
10/11/02	28		70880	2531	253				
09/13/02	35		75280	2151	224				
08/09/02	28		85440	3051	238				
07/12/02	28		87120	3111	238				
06/14/02	34		98800	2906	241				
05/11/02	25		74160	2966	256				
04/16/02	33		93280	2827	236				
03/14/02	29		84880	2927	218				
02/13/02	29		88240	3043	219				
01/15/02	35		101520	2901	232			1175760	13.5
12/11/01	34		100240	2948	256			3221	
11/07/01	28		86400	3086	251				
10/10/01	33		120880	3663	286				
09/07/01	29		109280	3768	284				
08/09/01	29		96000	3310	243				
07/11/01	30		97680	3256	247				
06/11/01	33		104400	3164	259				
05/09/01	30		98800	3293	268				
04/09/01	26		89360	3437	228				
03/14/01	33		87680	2657	217				
02/09/01	29		83520	2880	217				
01/11/01	31		85280	2751	215			1198960	13.8
12/11/00	35		114800	3280	238			3285	
11/06/00	31		110640	3569	254				

STANLEY BOYD SCHOOLS

52-7383845-8

Meter 013065641

Premise Number: 302747163

High School

electric

507 E 1ST AVE

ES 5.2 kwh/SF/yr
MS 8.1 kwh/SF/yr
HS 8.1 kwh/SF/yr

140000 SF

Pk Cntl TOD Service PDL = 100 kW

read date	days	on-kwh	off-kwh	tot-kwh	kwh/day	act kw	PF	elect\$	est PCR save	kwh/yr	kwh/SF/yr
02/18/16	29	24251	18635	42885	1479	163	99%	\$4,851	\$171	423751	3.0
01/20/16	35	22557	21657	44213	1263	170	98%	\$4,858	\$190		
12/16/15	28	19999	15176	35175	1256	160	99%	\$4,180	\$163		
11/18/15	35	25480	17591	43071	1231	154	99%	\$4,735	\$146		
10/14/15	29	24251	14488	38739	1336	195	98%	\$4,919	\$257		
09/15/15	30	19599	12412	32011	1067	190	98%	\$4,578	\$424		
08/16/15	31	10904	10504	21408	691	87	97%	\$2,960	\$0		
07/16/15	30	8832	8448	17280	576	77	97%	\$2,561	\$0		
06/16/15	30	18862	12639	31500	1050	174	99%	\$4,237	\$349		
05/17/15	31	22793	14994	37786	1219	167	99%	\$4,415	\$182		
04/16/15	29	21730	15661	37391	1289	156	99%	\$4,292	\$152		
03/18/15	29	21122	17006	38128	1315	171	98%	\$4,415	\$192		
02/17/15	30	26600	20449	47049	1568	163	98%	\$4,949	\$171		
01/18/15	34	22638	21554	44193	1300	172	98%	\$4,712	\$195		
12/15/14	33	25121	21345	46466	1408	169	98%	\$4,824	\$187		
11/12/14	29	23235	15646	38881	1341	170	99%	\$4,450	\$190		
10/14/14	29	23427	15038	38465	1326	161	99%	\$4,583	\$287		
09/15/14	32	19561	14661	34221	1069	183	99%	\$4,574	\$391		
08/14/14	29	9535	9701	19236	663	68	97%	\$2,411	\$0		
07/16/14	30	10311	10797	21108	704	92	97%	\$2,978	\$0		
06/16/14	32	20231	14845	35076	1096	174	98%	\$4,395	\$201		
05/15/14	29	22588	17006	39594	1365	159	99%	\$4,397	\$160		
04/16/14	29	22034	17581	39615	1366	168	99%	\$4,442	\$184		
03/18/14	29	23369	19788	43157	1488	173	98%	\$4,685	\$198		
02/17/14	32	26302	24529	50831	1589	175	98%	\$5,145	\$203		
01/16/14	32	22736	22502	45237	1414	180	98%	\$4,716	\$217		
12/15/13	33	26048	23867	49916	1513	193	99%	\$4,998	\$252		
11/12/13	29	25227	18583	43810	1511	222	99%	\$4,850	\$331		
10/14/13	29	26639	19629	46268	1595	207	99%	\$5,127	\$504		
09/15/13	32	22199	18052	40251	1258	215	98%	\$4,938	\$542		
08/14/13	29	10510	10378	20888	720	94	97%	\$2,897	\$0		
07/16/13	30	10424	12043	22467	749	92	97%	\$2,949	\$0		
06/16/13	32	19851	16614	36465	1140	171	99%	\$4,259	\$192		
05/15/13	29	24516	18186	42702	1473	172	98%	\$4,506	\$195		
04/16/13	30	22616	20525	43141	1438	177	98%	\$4,507	\$209		
03/17/13	31	25707	21978	47685	1538	189	98%	\$4,875	\$241		
02/14/13	29	26767	22050	48817	1683	200	98%	\$5,016	\$271		
01/16/13	34	24194	24159	48353	1422	186	98%	\$4,716	\$233		
12/13/12	31	25362	20277	45639	1472	193	99%	\$4,532	\$252		
11/12/12	29	25234	17676	42910	1480	177	99%	\$4,318	\$209		
10/14/12	31	25316	17954	43270	1396	208	99%	\$4,719	\$509		
09/13/12	30	21155	15207	36362	1212	231	98%	\$4,574	\$617		
08/14/12	29	14755	13891	28646	988	129	96%	\$3,475	\$137		
07/16/12	32	12569	13420	25989	812	144	96%	\$3,358	\$207		
06/14/12	30	19699	14093	33792	1126	205	98%	\$4,080	\$285		
05/15/12	29	24383	16778	41161	1419	195	98%	\$4,321	\$257		
04/16/12	32	21626	17372	38998	1219	216	98%	\$4,260	\$314		
03/15/12	29	26521	19982	46503	1604	201	98%	\$4,654	\$274		
02/15/12	29	28014	22873	50887	1755	202	98%	\$4,899	\$276		
01/17/12	34	25531	25164	50695	1491	217	98%	\$4,836	\$317		
12/14/11	31	27547	21388	48935	1579	210	98%	\$4,698	\$298		
11/13/11	31	26594	19595	46189	1490	211	98%	\$4,555	\$301		
10/13/11	29	26136	15827	41963	1447	195	99%	\$4,445	\$447		
09/14/11	27	21457	13449	34906	1293	240	98%	\$4,427	\$659		
08/18/11	32	17549	14961	32509	1016	106	97%	\$3,494	\$28		

07/17/11	30	7708	9428	17136	571	94	97%	\$2,391	\$0
06/17/11	30	17525	14952	32477	1083	209	98%	\$3,853	\$295
05/18/11	30			45200	1507	212		\$5,124	\$304
04/18/11	31			48400	1561	212		\$4,970	
03/18/11	28			41800	1493	222		\$4,112	
02/18/11	30			56400	1880	230		\$5,273	
01/19/11	34			55000	1618	214		\$4,842	
12/16/10	31	29600	23400	53000	1710	224	98%	\$4,814	
11/15/10	31	27000	21600	48600	1568	204	99%	\$4,366	
10/15/10	29	28000	17800	45800	1579	202	98%	\$4,604	
09/16/10	29	22000	15800	37800	1303	236	98%	\$4,719	
08/18/10	30	13000	13800	26800	893	118	96%	\$2,856	
07/19/10	34	12000	13000	25000	735	122	97%	\$2,762	
06/15/10	32	22200	17400	39600	1238	250	97%	\$4,540	
05/14/10	29	25400	19000	44400	1531	202	99%	\$4,188	
04/15/10	28	21400	17200	38600	1379	200	98%	\$3,830	
03/18/10	29	27400	21400	48800	1683	232	99%	\$3,531	
02/17/10	29	26800	28200	55000	1897	224	96%	\$4,743	
01/19/10	35	30000	26400	56400	1611	242	98%	\$5,106	
12/15/09	33	28200	25000	53200	1612	216	98%	\$4,750	
11/12/09	29	27200	20400	47600	1641	202	98%	\$4,330	
10/14/09	29	28800	18400	47200	1628	250	98%	\$5,120	
09/15/09	32	21200	16000	37200	1163	254	97%	\$4,862	
08/14/09	28	8800	9400	18200	650	104	98%	\$2,242	
07/17/09	30	9400	12400	21800	727	104	92%	\$2,416	
06/17/09	30	21400	16000	37400	1247	230	97%	\$4,379	
05/18/09	31	26200	21200	47400	1529	210	98%	\$4,420	
04/17/09	31	27800	25600	53400	1723	224	98%	\$4,821	
03/17/09	29	27800	18400	46200	1593	224	98%	\$4,123	
02/16/09	28	28600	24400	53000	1893	232	98%	\$4,865	
01/19/09	35	27000	27600	54600	1560	242	97%	\$4,989	
12/15/08	33	30400	26400	56800	1721	228	98%	\$5,059	
11/12/08	29	27200	21400	48600	1676	238	98%	\$4,653	
10/14/08	29	27400	18200	45600	1572	224	98%	\$4,822	
09/15/08	33	22400	17800	40200	1218	264	97%	\$5,133	
08/13/08	28	8800	12200	21000	750	100	94%	\$2,338	
07/16/08	30	10000	12600	22600	753	100	95%	\$2,444	
06/16/08	32	23000	20400	43400	1356	216	98%	\$4,535	
05/15/08	28	26400	20000	46400	1657	226	99%	\$4,416	
04/17/08	34	27000	25800	52800	1553	240	95%	\$4,738	
03/14/08	28	29000	23800	52800	1886	242	97%	\$4,799	
02/15/08	63	25200	27600	52800	838	236	98%	\$4,635	
01/18/08	35	34000	23600	57600	1646	112	71%	\$2,997	
12/14/07	32	33600	23600	57200	1788	242	97%	\$4,686	
11/12/07	28	21200	18800	40000	1429	256	99%	\$3,844	
10/15/07	31	35200	24200	59400	1916	256	96%	\$5,180	
09/14/07	30	24800	16000	40800	1360	274	96%	\$4,718	
08/15/07	29	12800	12800	25600	883	146	96%	\$2,725	
07/17/07	33	13200	13800	27000	818	120	95%	\$2,555	
06/14/07	30	25400	18200	43600	1453	216	96%	\$4,033	
05/15/07	28	28000	18800	46800	1671	244	97%	\$4,149	
04/17/07	32	28800	24200	53000	1656	240	96%	\$4,363	
03/16/07	28	27200	21800	49000	1750	234	96%	\$3,175	

start PCR

518400 3.7

519000 3.7

537600 3.8

553000 4.0

53000