






# FOREST LIGHTING

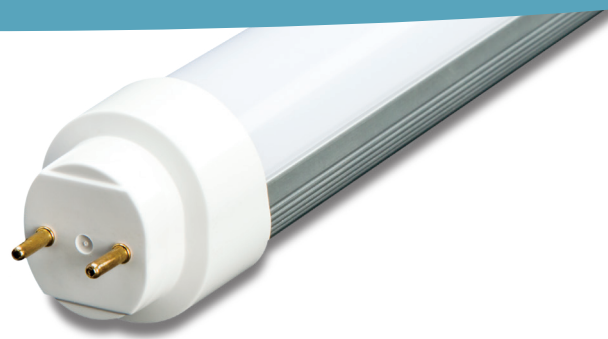
Sustainable illumination

**univ8™**  
LED T8

Univ8™ is the ultimate T8 retrofit solution. This universal lamp can be installed in fixtures with or without a ballast, making it ideal for retrofit applications where fluorescent systems are being upgraded to save energy and maintenance costs. Customers can elect to utilize the existing ballast with no rewiring, or install directly without a ballast. Univ8™ is available in four color temperatures.

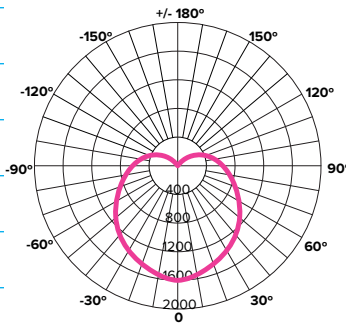
## UNIV8™ LAMP MODELS

3500K	T8U435-15 
4100K	T8U441-15 
5000K	T8U450-15 
6000K	T8U460-15



## PERFORMANCE & PARAMETERS

CCT	3500K / 4100K / 5000K / 6000K	
Beam Angle	120°	
CRI	> 80 Ra	
Efficacy	130 lm/W	
Rated Average Life	50,000 Hrs	
Input Voltage	100-277V	
Power Frequency	50 / 60 Hz	
Power Tolerance	+- 10%	
PF	.99/120V	.98/277V
THD	6.18/120V	8.07/277V



Beam angle 120°

	<b>15 WATT</b>
Luminous Flux	2000 lm
Input Power	15W
Input Current	0.125A-0.350A
Fluorescent Equivalent	32W

## FEATURES

- Integral Driver
- Diffused lens
- No rewiring required
- Can be installed with or without an instant start electronic ballast
- For use with shunted tombstones
- Suitable for damp locations

## BENEFITS

- No Mercury
- Made of Polycarbonate and Aluminum
- Long lifetime
- Low maintenance cost
- High efficiency
- Compatible with voltages 100-277V
- UL Listed in US and Canada
- DLC listed for utility rebates

## WARRANTY

5 Year Warranty

## LISTINGS AND CERTIFICATIONS



Forest Lighting, 2252 Northwest Pkwy SE, Suite D, Marietta, GA 30067 800-994-2143



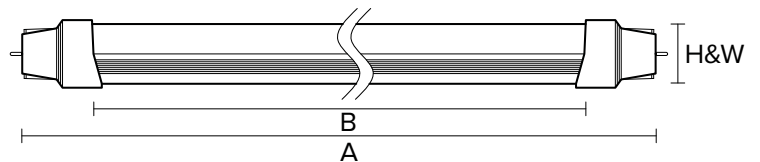
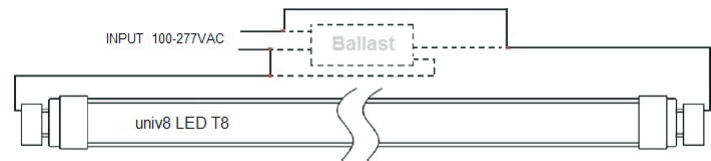
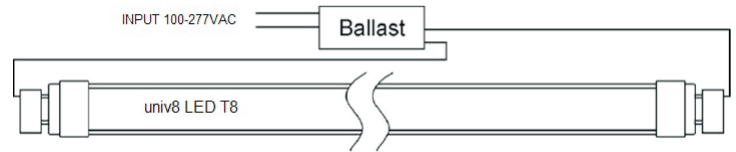
## WIRING DIAGRAM

### PHYSICAL CHARACTERISTICS ENGLISH

	<b>4 FEET</b>
Body Length (A)	47.17"
Lighted Length (B)	45.2"
Cross-Section (H x W)	1.18 x 1.02"
Net Weight	12.52 oz

### PHYSICAL CHARACTERISTICS METRIC

	<b>4 FEET</b>
Body Length (A)	1200mm
Lighted Length (B)	1150mm
Cross-Section (H x W)	30 x 26mm
Net Weight	305g
Operating Temperature	-4 to +104 °F, -20 to +40 °C
Operating Humidity	10 to 85% RH
Operating Frequency	≥ 120 Hz
Base	G13



See tables above for dimensions