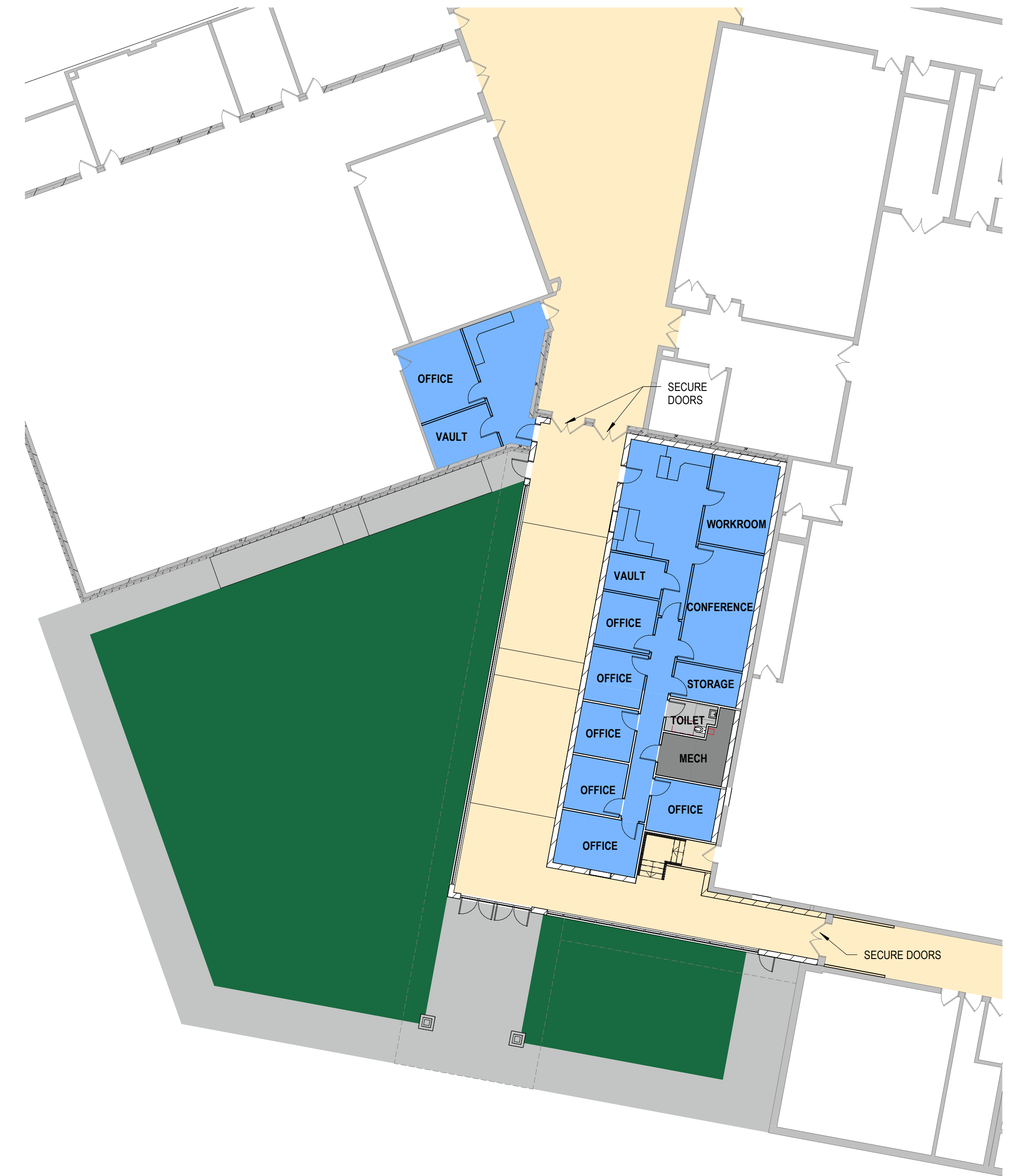




# STANLEY BOYD K-12 SCHOOL



- ADMINISTRATION
- CIRCULATION
- CLASSROOM
- GYMNASIUM
- MECHANICAL
- TOILETS



TOTAL ADDITION SF. 4,500 SF  
\$400/SF - \$1.8 TO \$2.1 MILLION CONSTRUCTION  
\$2.2 MILLION TO \$2.5 MILLION TOTAL PROJECT COST